



DRAINZAP

A revolutionary biological drain solution that dissolves hair and slime impacting showers, sinks and other drainage points

What makes it different?

DRAINZAP transforms drain cleaning with a powerful, revolutionary formula that cuts through hair and organic waste as effectively as traditional products—but without caustic chemicals, making it safe for drains and the environment.

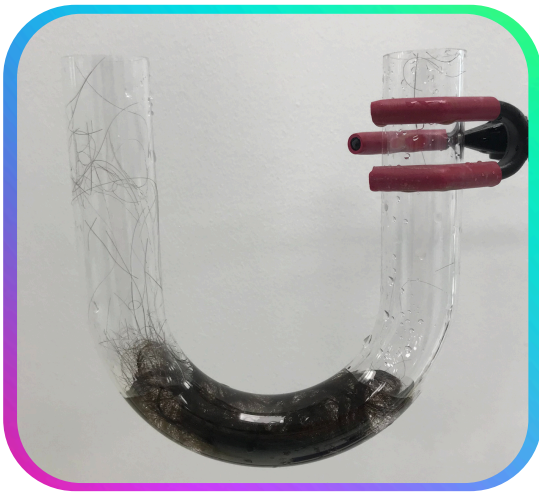
Benefits

- ✓ Fast acting formula
- ✓ Non-corrosive
- ✓ Effective and efficient at removing blockages
- ✓ Non-toxic and safe for regular use

Where can I use it?

- ✓ Showers
- ✓ Sinks - kitchen & bathroom
- ✓ Baths
- ✓ All other drain points

Before DRAINZAP



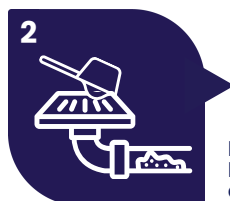
30 mins after DRAINZAP



How do I use DRAINZAP?



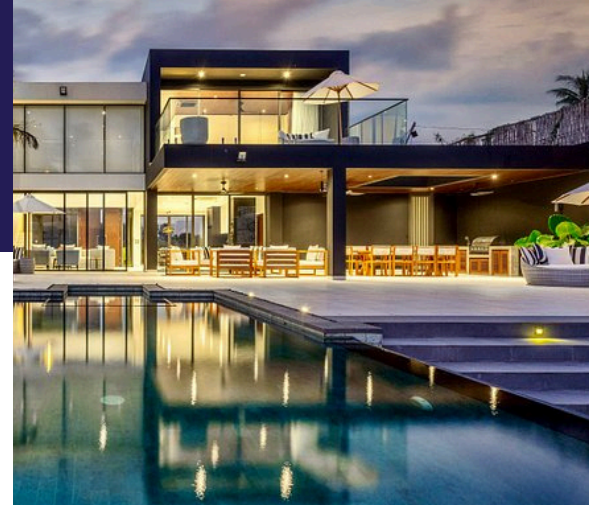
1 Run warm water through the drain for 10 seconds



2 Pour one scoop of DRAINZAP into the drain



3 Leave for at least an hour, or overnight for best results



Case Study: International Resort

Enabling free flowing drains and enhanced customer satisfaction.

Overview

This international island resort currently has 39 luxury villas and expanding. They range from studios to 7 bedroom villas and have high occupancy throughout the year. The resort is well known for its high standards of accommodation, food, scenery and overall experience for international travellers.

The Challenge

- Customer complaints
- Slow draining or blocked shower and baths
- Inefficient for staff dealing with complaints and amending the problems
- Expensive for plumbing call outs

Benefits

- Safe and easy to use
- Fast acting formula
- Non-corrosive for plumbing infrastructure

Industry

Hotels & Resorts

Location

Indonesia

The solution

- Run warm water down the drain for 10 seconds and then apply one scoop (20g) of DRAINZAP.
- Wait 30 minutes to 1 hour and then run warm water down the drain once again, the hair obstacle will be fully dissolved.

Before DRAINZAP



Hair is a constant issue in the drains, often hard to get out or very unpleasant for staff

30 mins after DRAINZAP



After one scoop (20g) and 1 hour, the drain is once again free flowing

[Contact Us](#)